

# FES/FESC/FESF Class C

HRC-II-MISC Canadian Fuses

UL/CSA LISTED POWER FUSES



Mersen Class C fuses have British standard (BS88) dimensions and are exact replacements for the British fuses and older HRCII-C fuses. Class C fuses are not dimensionally or electrically interchangeable with other North American fuses. They feature ceramic bodies and bolt-in mounting. They are for short-circuit protection only, in motor controllers, for example, where overload protection is provided by an overload relay.

\* Ceramic version available upon request

## HIGHLIGHTS

- BS88 dimensions
- Fast acting

## APPLICATIONS

- Short circuit and back-up protection of motor controllers and components

## CATALOG NUMBERS (AMPS)

FES2	FES25	FES100	FESC100	FESF300	FESC350
FES4	FES30	FES125	FESC125	FESF350	FESC400
FES6	FES40	FES150	FESC150	FESF400	FESC450
FES10	FES50	FES200	FESC200	FESC250	FESC500
FES15	FES60	FESC80	FESF250	FESC300	FESC600
FES20	FES80				

## RATINGS

- **Volts:** 600VAC, 460VDC, 450VDC, 350VDC
- **Amps:** 2 to 600A
- **I.R.:** 200kA I.R. AC (2-600A), 40kA I.R. DC
- **460VDC:** FES (2-60A), FESF (250-400A), FESC (250-400A)
- **450VDC:** FESC (450-600A)
- **350VDC:** FES (80-100A), FESC (80-200A)

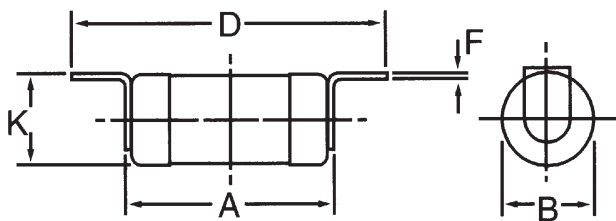
## APPROVALS/STANDARDS

- CSA Certified HRCII-MISC
- IEC 269-2-1

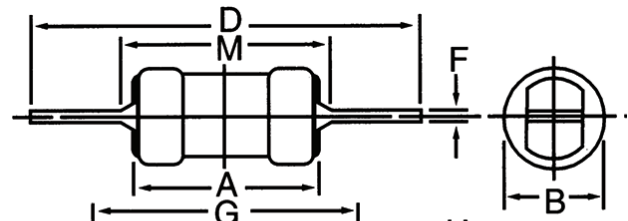


### DIMENSIONS

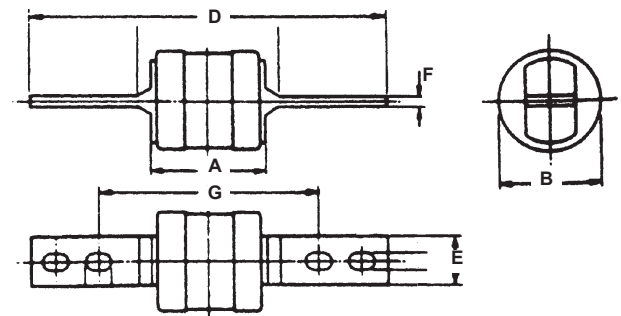
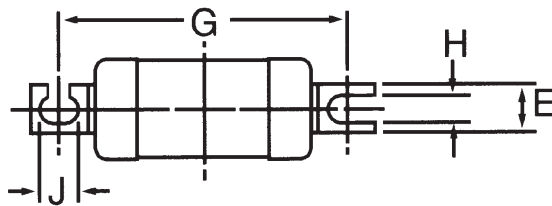
Catalog No.	A		B		D		E		F		G		H		K	
	In	mm	In	mm	In	mm	In	mm	In	mm	In	mm	In	mm	In	mm
FES 2-30	2.06	52.3	0.81	20.6	3.31	84.1	0.35	8.9	0.06	1.6	2.83	71.9	0.20	5.2	0.84	21.3
FES 40-60	2.19	55.6	1.06	26.9	3.44	87.4	0.50	12.7	0.06	1.6	2.77	70.4	0.20	5.2	1.07	27.2
FES 80-100	2.69	68.3	1.34	34.0	4.31	109.5	0.75	19.1	0.13	3.2	3.64	92.5	0.34	8.7	1.43	36.3
FES 125-200	2.69	68.3	1.58	40.1	4.31	109.5	0.75	19.1	0.13	3.2	3.64	92.5	0.34	8.7	1.69	42.9
FESC 80-100	2.44	61.9	1.34	33.9	5.31	134.9	0.75	19.1	0.13	3.2	4.28	108.7	-	-	-	-
FESC 125-200	2.44	61.9	1.59	40.3	5.31	134.9	0.75	19.1	0.13	3.2	4.28	108.7	-	-	-	-
FESF 250-400	3.00	76.2	2.00	50.8	5.38	136.7	1.00	25.4	0.25	6.4	4.25	108.0	0.41	10.4	-	-
FESC 250-400	3.00	76.2	2.00	50.8	8.25	209.6	1.00	25.4	0.25	6.4	5.16	131.0	-	-	-	-
FESC 450-600	3.00	76.2	2.88	73.0	8.25	209.6	1.00	25.4	0.38	9.5	5.06	128.6	-	-	-	-



FES2-30  
FES40-60  
FES80-100  
FES125-200



FESC80-100  
FESC125-200  
FESF250-400



FESC250-400  
FESC450-600

© 2025 Mersen. All rights reserved. Mersen reserves the right to change, update, or correct, without notice, any information contained in this datasheet.