

BS1361 House Service Fuses gG 415VAC

LOW VOLTAGE IEC FUSES

BS FUSE-LINKS



Mersen's range of domestic service fuses is carefully engineered to respond effectively and reliably to the diverse needs encountered in customer switchboards, electricity control units, as well as residential and office buildings. This diversified range aims to provide optimum protection and secure management of the power supply, guaranteeing users peace of mind in the face of everyday electrical challenges.

TECHNICAL DATA OVERVIEW

Current Range In	2 to 100 A
Rated voltage AC (IEC)	415 V
Breaking capacity AC	33 to 80 kA
Speed/Characteristic	gG
Body Material	Ceramic
BS type	BME, BMF

FEATURES & BENEFITS

- Reliability
- Immediate isolation
- Ensures fire safety

APPLICATIONS

- Switchboards
- Electricity control units
- Residential building
- Office building
- Street lighting
- SPD

STANDARDS

- ASTA 20



BS1361 House Service Fuses gG 415VAC

PRODUCT RANGE



BME42V05

BS1361 House Service Fuses gG 415VAC - BME

Catalog number	Item number	Size	Rated voltage AC (IEC)	Rated current I _n	Pre-arcing I ² t	Clearing I ² t at Rated Voltage	Rated breaking capacity AC	Power dissipation at I _n	Package
BME42V05	C1003860	22x57	415 V	5 A	12 A ² s	100 A ² s	33 kA	1.5 W	10
BME42V10	D1003861	22x57	415 V	10 A	25 A ² s	185 A ² s	33 kA	1.7 W	10
BME42V15	E1003862	22x57	415 V	15 A	120 A ² s	540 A ² s	33 kA	1.9 W	10
BME42V20	F1003863	22x57	415 V	20 A	250 A ² s	1125 A ² s	33 kA	2.1 W	10
BME42V25	G1003864	22x57	415 V	25 A	300 A ² s	1890 A ² s	33 kA	2.3 W	10
BME42V30	H1003865	22x57	415 V	30 A	400 A ² s	4500 A ² s	33 kA	2.65 W	10
BME42V40	L1003868	22x57	415 V	40 A	520 A ² s	5850 A ² s	33 kA	4.4 W	10
BME42V45	N1003870	22x57	415 V	45 A	1250 A ² s	11700 A ² s	33 kA	4.6 W	10
BME42V50	Q1003872	22x57	415 V	50 A	1600 A ² s	16000 A ² s	33 kA	4.75 W	10
BME42V60	R1003873	22x57	415 V	60 A	2100 A ² s	19200 A ² s	33 kA	4.8 W	10
BME42V70	S1003874	22x57	415 V	70 A	2600 A ² s	26250 A ² s	33 kA	5.3 W	10
BME42V80	T1003875	22x57	415 V	80 A	4000 A ² s	30000 A ² s	33 kA	5.6 W	10



BM-
F42V0100

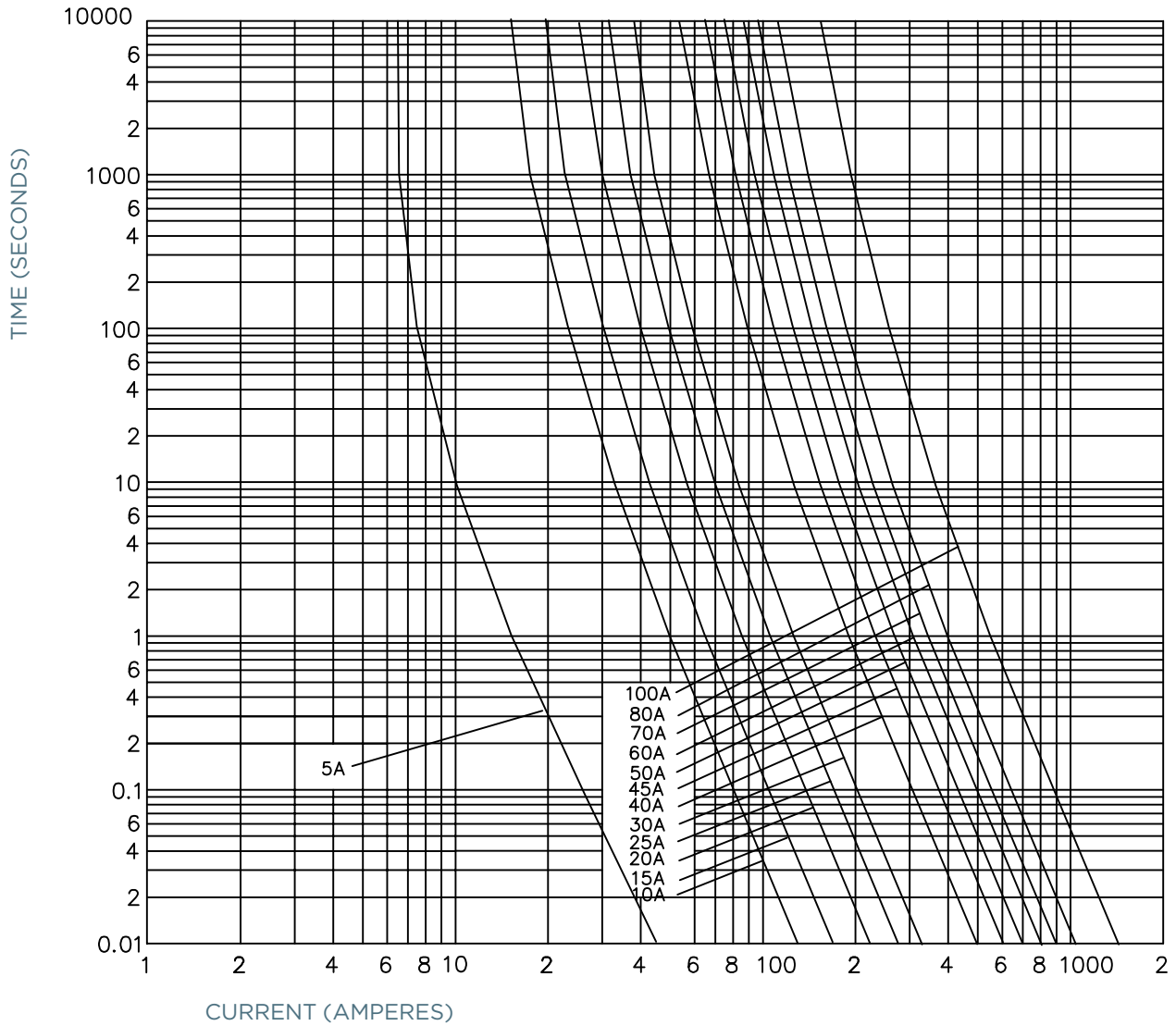
BS1361 House Service Fuses gG 415VAC - BMF

Catalog number	Item number	Size	Rated voltage AC (IEC)	Rated current I _n	Pre-arcing I ² t	Clearing I ² t at Rated Voltage	Rated breaking capacity AC	Power dissipation at I _n	Package
BMF42V030	V1003876	30x57	415 V	30 A	400 A ² s	4500 A ² s	33 kA	2.6 W	6
BMF42V040	W1003877	30x57	415 V	40 A	520 A ² s	5850 A ² s	33 kA	4.3 W	6
BMF42V050	X1003878	30x57	415 V	50 A	1600 A ² s	16000 A ² s	33 kA	4.6 W	6
BMF42V060	Y1003879	30x57	415 V	60 A	2100 A ² s	19200 A ² s	33 kA	4.7 W	6
BMF42V070	Z1003880	30x57	415 V	70 A	2600 A ² s	26250 A ² s	33 kA	5.2 W	6
BMF42V080	A1003881	30x57	415 V	80 A	4000 A ² s	30000 A ² s	33 kA	5.5 W	6
BMF42V0100	B1003882	30x57	415 V	100 A	8500 A ² s	68000 A ² s	33 kA	5.8 W	6

BS1361 House Service Fuses gG 415VAC

TIME CURRENT CHARACTERISTIC CURVES

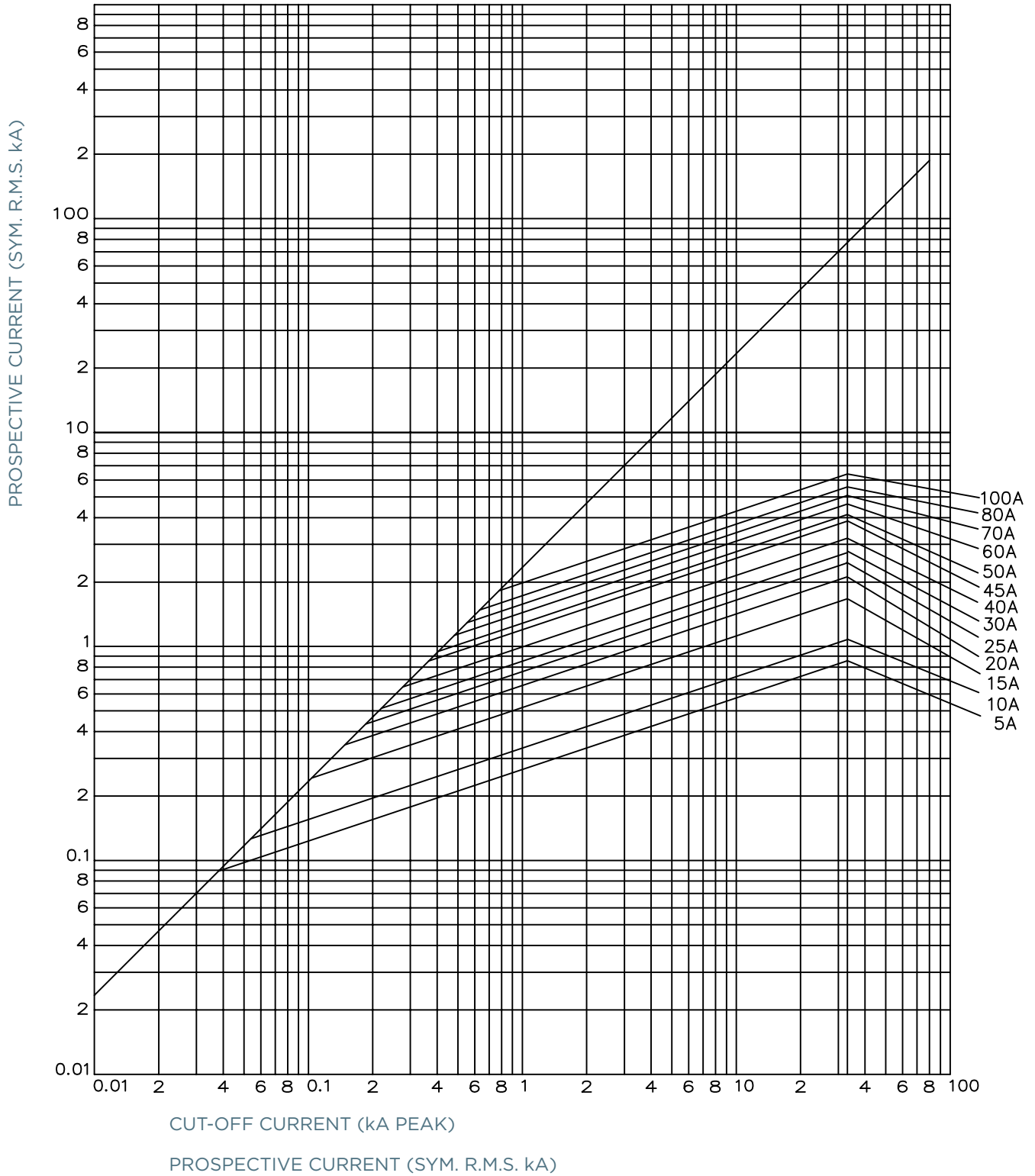
gG curve - 2 to 100 A - 415VAC



BS1361 House Service Fuses gG 415VAC

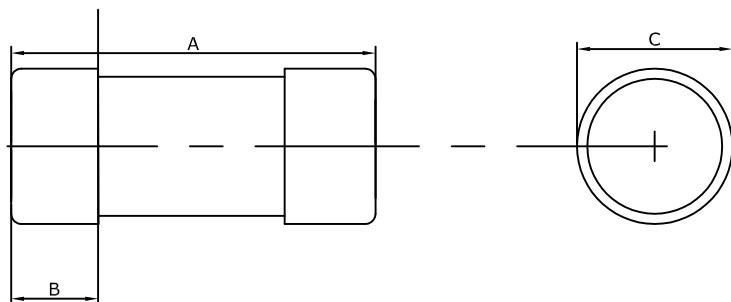
CUT-OFF CURRENT CHARACTERISTIC

gG curve - 2 to 100 A - 415VAC



BS1361 House Service Fuses gG 415VAC

DIMENSIONS



Dimensions in mm

Size	Fuse Type	Current rating (A)	A	B	C
22x57	BME	5, 10, 15, 20, 25, 30, 40, 45, 50, 60, 70, 80	57	16	22.23
30x57	BMF	30, 40, 50, 60, 70, 80, 100	57	16	30.16