

PROTECT YOUR HOME INVESTMENTS WITH MERSEN'S SURGE-TRAP® STLC & STXH SURGE PROTECTIVE DEVICES



Ask your Electrical Contractor for whole house protection with the reliability and safety of Mersen's Surge-Trap STLC & STXH SPDs

Think about all of the expensive and important electronics in your home. Wouldn't it be nice to know that your investments are safe and protected from lightning strikes or other sources of voltage surges?

- Television
- Home Entertainment System
- Smart Home Equipment
- Kitchen Appliances
- Washer & Dryer
- Air Conditioner
- Security System

RELAX WITH MAXIMUM PROTECTION FROM MERSEN'S SURGE TRAP® STLC & STXH SPDs

Mersen's Surge-Trap® STXH and STLC surge protective devices add a critical layer of surge protection for your entire home. From your family room to your office, and your kitchen, your entire electrical system is protected. This simple whole house solution is installed at your load center - out of sight, out of mind.

Featuring Mersen's industry leading fail safe TPMOV® Technology inside, Mersen's Surge-Trap® SPDs meet the rigorous safety requirements of the UL 1449 4th edition safety standard and need no additional overcurrent protection.

Rest easy knowing your home and valuable electronics are protected.



STLC240S025

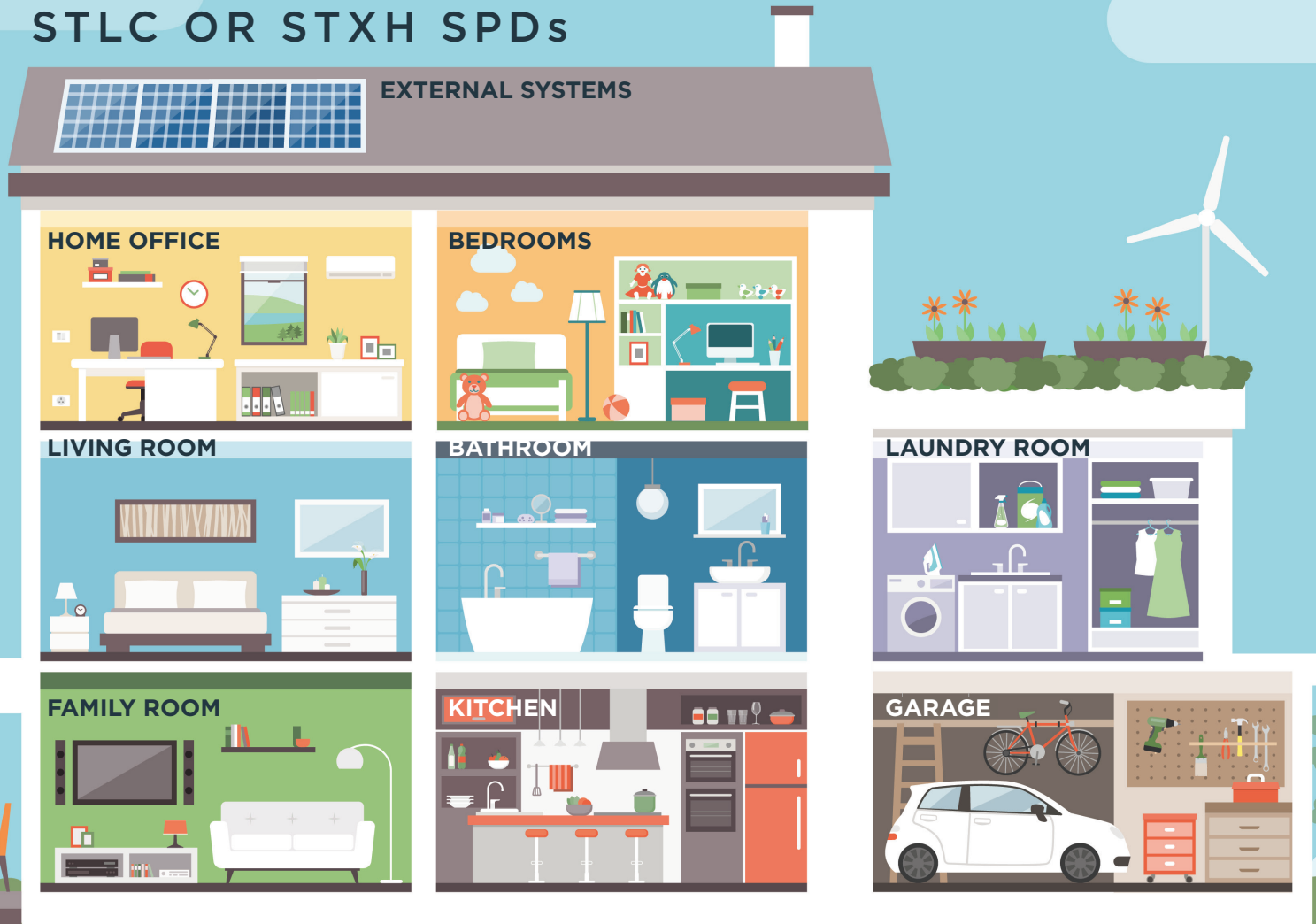
- Easily installed directly into residential load center
- 25kA Surge Capacity
- No breaker required
- Flexibility to fit into most load centers with 1" spacings



STXH240S05

- CSA C22.2 Listed
- 50kA Surge Capacity
- NEMA 4X enclosure for Indoor/Outdoor use
- Can be installed in any panel

ONE COMPACT DEVICE PROTECTS YOUR WHOLE HOUSE FROM DAMAGING SURGES CHOOSE MERSEN'S SURGE-TRAP® STLC OR STXH SPDs



HOME OFFICE

- Computer
- Monitor
- Printer

LIVING/FAMILY ROOM

- Entertainment System
- Television
- Smart Thermostat

BEDROOMS

- Mobile Devices (tablets, cell phones, games)
- Television

KITCHEN

- Stove
- Refrigerator
- Small Appliances
- Home Hub

LAUNDRY ROOM

- Washer
- Dryer

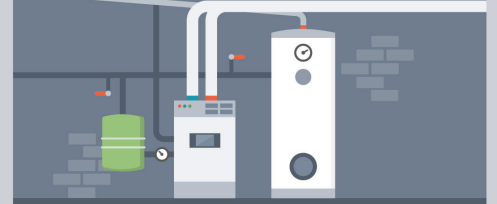
GARAGE

- Charging Station
- Power Tools

UTILITY ROOM

- Furnace
- Water Heater
- HVAC

UTILITY ROOM



EXTERNAL SYSTEMS

- Rooftop Solar Panels
- Wind Turbine
- Security System