

ZOOM

SIGNAL & POWER TRANSFER SYSTEMS

USDK686
FOR GE 1.5 ESS WIND TURBINES
30A / 690V



USDK686 is a modern technology signal, data and power slip ring system, using Mersen premium carbon brush grades to reliably transmit all important signal, data and power channels.

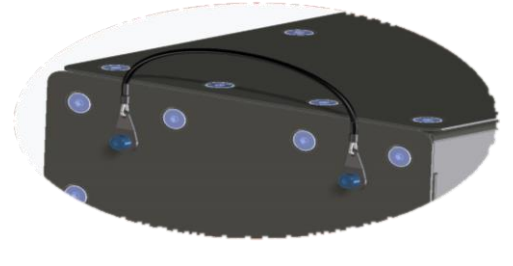
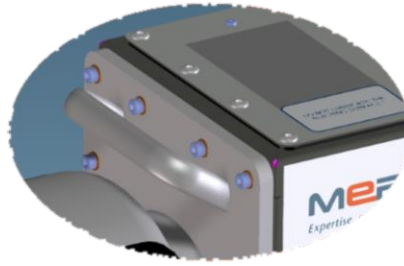
Mersen premium carbon grades are based on tribological experience with low wear rate, which translates to less dusting, reliable power transfer and extended life of the component.

- Data transmission up to 10 Mbit/s via special carbon grade
- System without heating – can be ordered separately and integrated any time
- Integrated connection cabinet allows for easy access of internal connections and quicker maintenance
- A novel sealing design provides extra protection from environmental degradation. Designed according to international ISO, UL and CSA standards.
- Cleaning is a quick process with removable covers and captive quick release quarter turn studs as shown on overleaf.

FACTS & FIGURES

- Dimensions (L x W x H)
850 x 231 x 251 mm
- Weight:
28 kg
- IP54 housing
- Handling: 2 handle bars
- Number of channels:
30 ways
- Max. Amp rate:
30 A
- Max. Voltage:
690 V
- LV / Data / Signal:
400VAC / 16A
230VAC / 20A
24VDC / 10A
24VDC / 5A
24VDC / 1A
24VDC / 1A,
Ethernet 10 Mbit/s

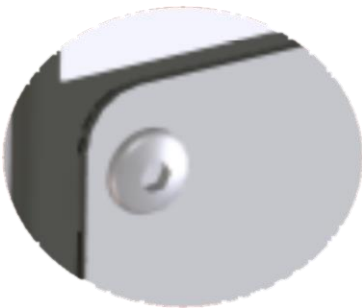
MERSEN PROPERTY



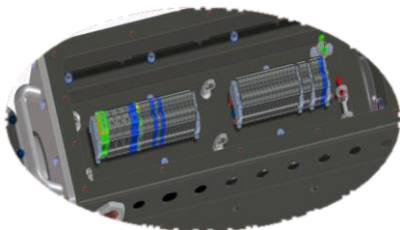
Handles at each end of the unit



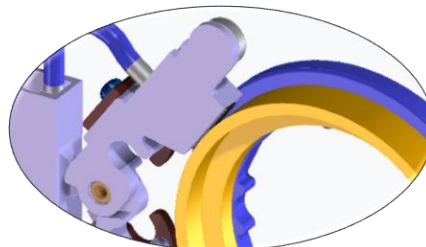
Flat adapter for easy access, easy cable clamping and a rubber seal



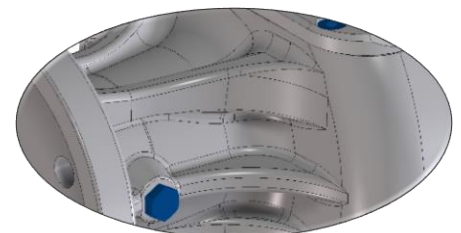
Captive quarter turn quick release screws



Power and data signal ports for stator side inside top cover



MERSEN brush grade featuring maximum of life and reliability



Adapter neck with minimized stress using FEM design standards

MERSEN PROPERTY

Contact: info.ptt@mersen.com

PTT-spts-usdk686-US-2309